

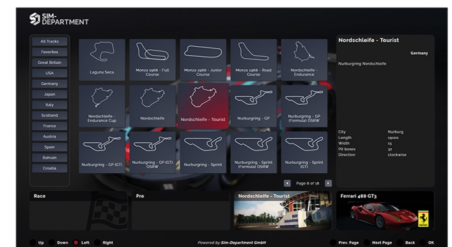
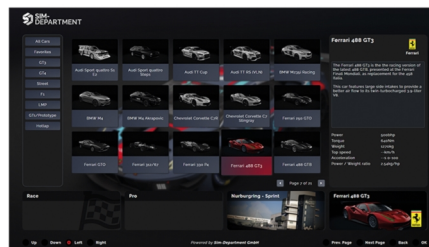
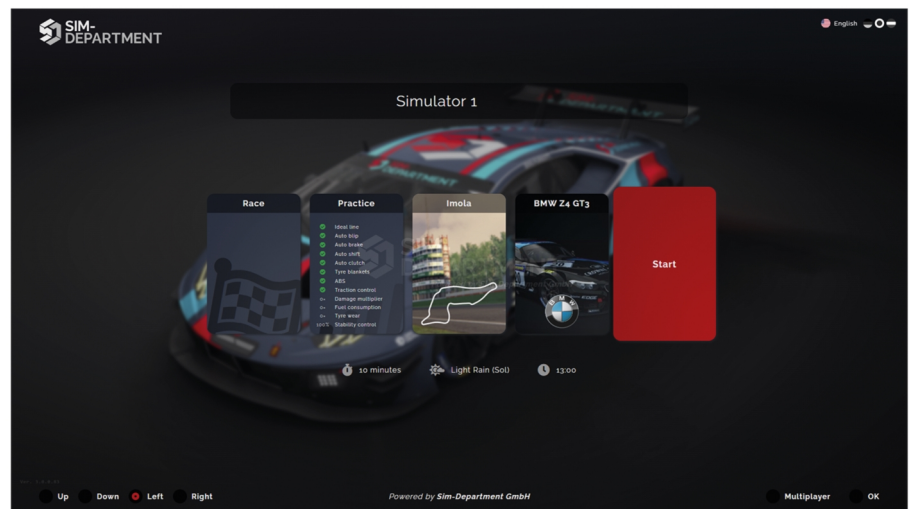
# SD SOFTWARE SD LAUNCHER

## THE EASIEST WAY FOR SIMRACING

### Features

- control via steering wheel buttons
- selection of cars & tracks
- selection of different race modes (practice, hotlap, quick race, LAN/ online)
- selection of difficulty/ driving aids
- name input via onscreen keyboard
- cars & tracks can be fixed for events etc.
- 6 pre-set servers, you can add more
- fully csp ready. 24hrs day/night cycle, adjustable rain, wet tires & track physics
- customize the overall appearance with your colors, your logos and backgrounds
- lockscreen: drivers unlock the simulator easy with their own unique qr code

for Assetto Corsa



Where to Buy: <https://www.force2motion.de/de/sim-racing-software/>

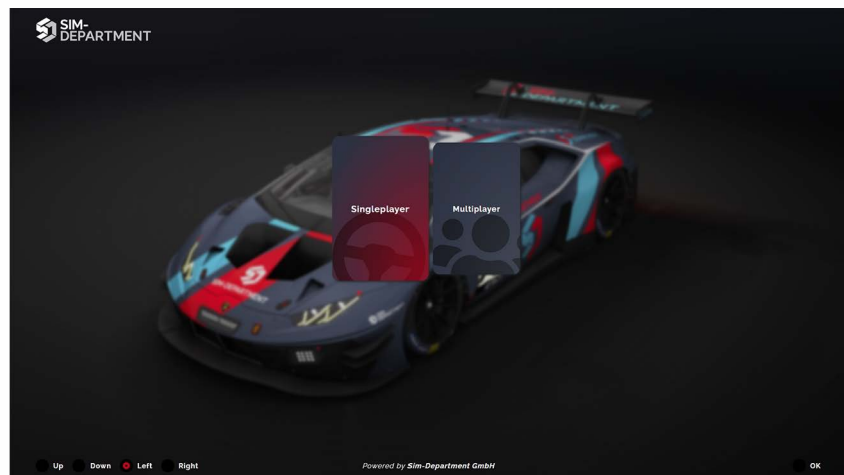
# SD SOFTWARE

# SD LAUNCHER

## Features

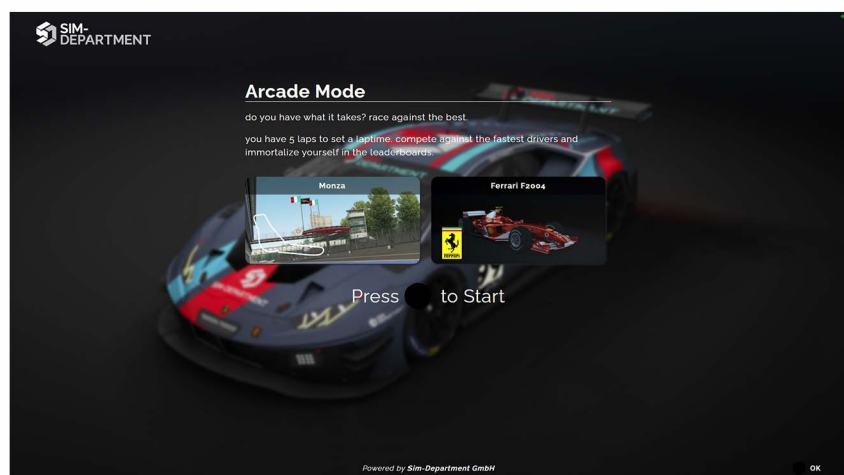
**Main Menu Mode:** player is controlling the simulator all by himself

- simulator is controlled via steering wheel or button box
- player can even create servers



**Arcade Mode:** special mode for events or contests with locked settings

- players can only drive a pre-set session or hotlaps to enter a place on the leaderboard



**Lockscreen Mode:** the main screen is locked

- to unlock the screen and drive on the simulator you need a qr code and a qr code scanner
- the qr code contains all needed informations like name, booked sessions, car and track



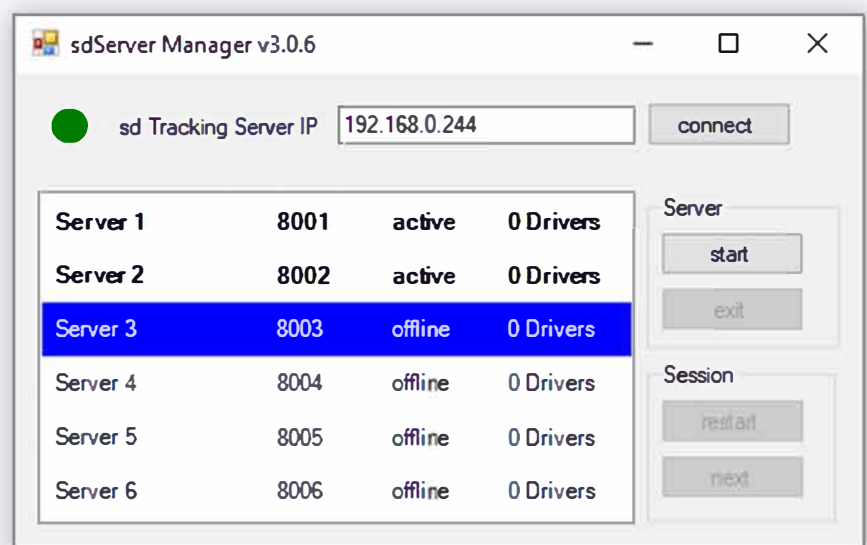
Where to Buy: <https://www.force2motion.de/de/sim-racing-software/>

# SD SOFTWARE

# SD SERVER MANAGER

## Features

- control all your preconfigured LAN - servers
- start/ stop servers
- restart or skip sessions



# SD SOFTWARE

# SD COMMAND

CONTROL YOUR SIMULATORS REMOTELY

## Features

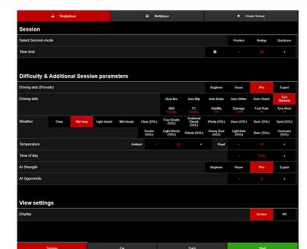
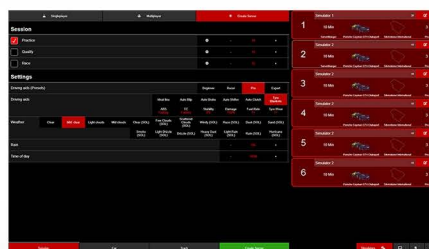
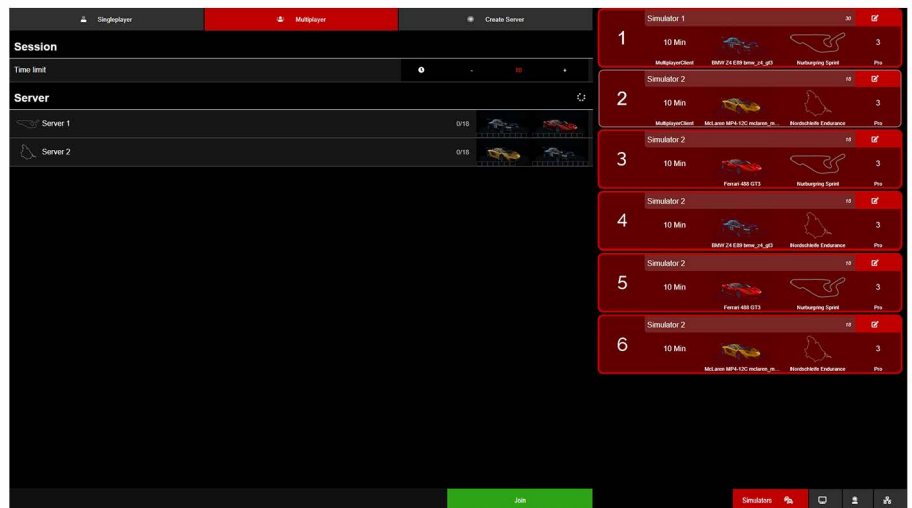
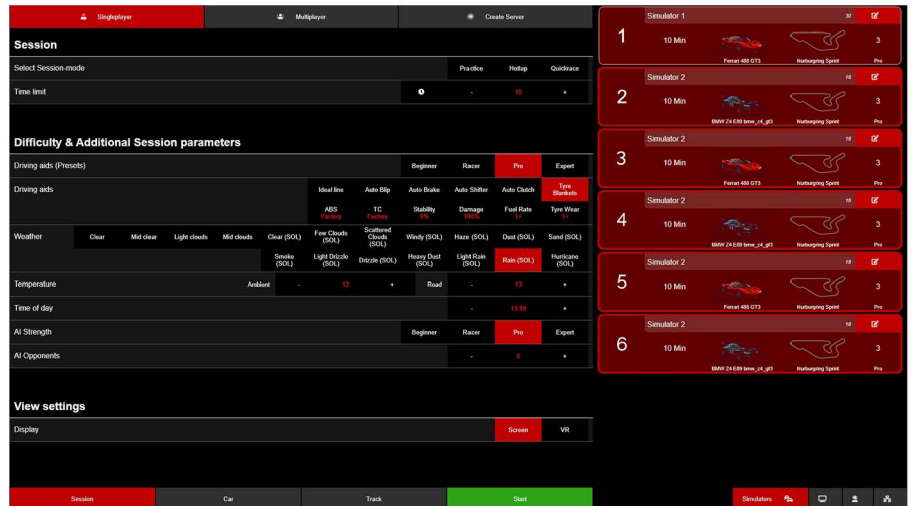
- control all your simulators remotely
- manage settings for every simulator individually on a single device
- set all important parameters like
  - offline sessions (practice, hotlap, quickrace)
  - online sessions (LAN or internet)
  - driver names
  - session times
  - driving aids, weather, time of day
  - AI strength and quantity for quickraces
- car & track selection

## further actions during races/sessions:

- change cameras on track per car
- skip or restart sessions/ races
- activate/ deactivate driving aids
- car/ session reset

## Screens

- full external monitor control
  - leaderboards
  - live maps
  - statistics



Where to Buy: <https://www.force2motion.de/de/sim-racing-software/>



# SD SOFTWARE

# SD COMMAND

## Features

**Singleplayer:** practice, hotlap or quickrace

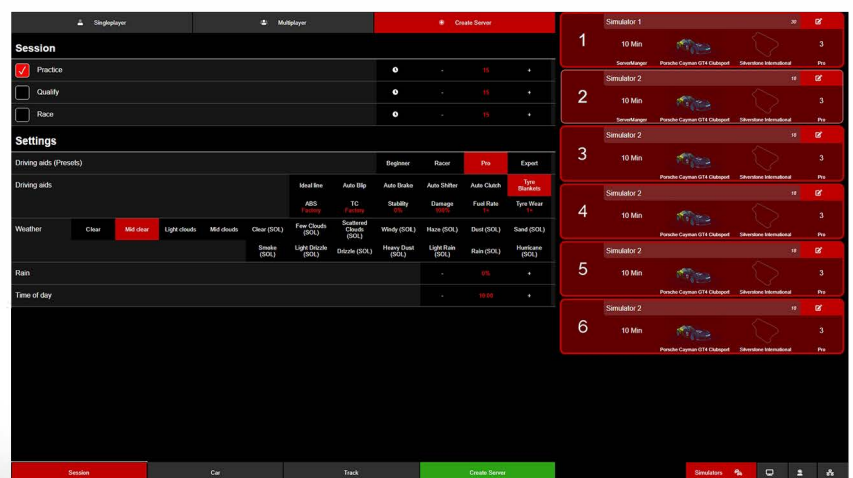
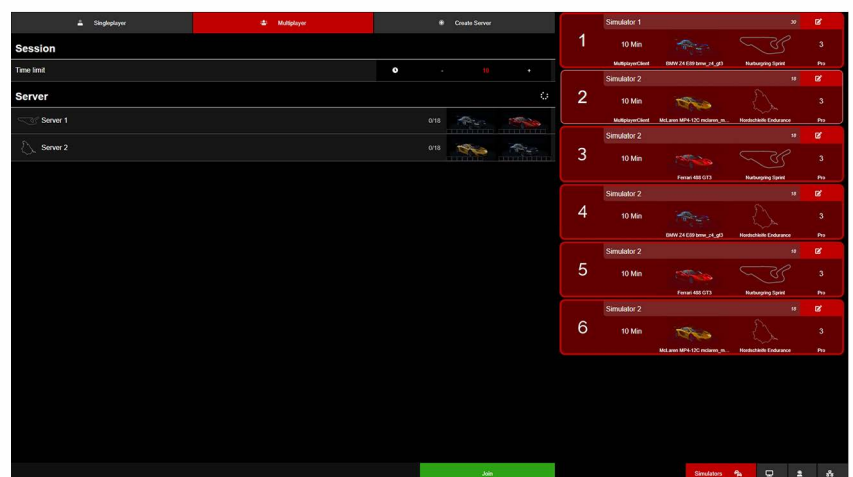
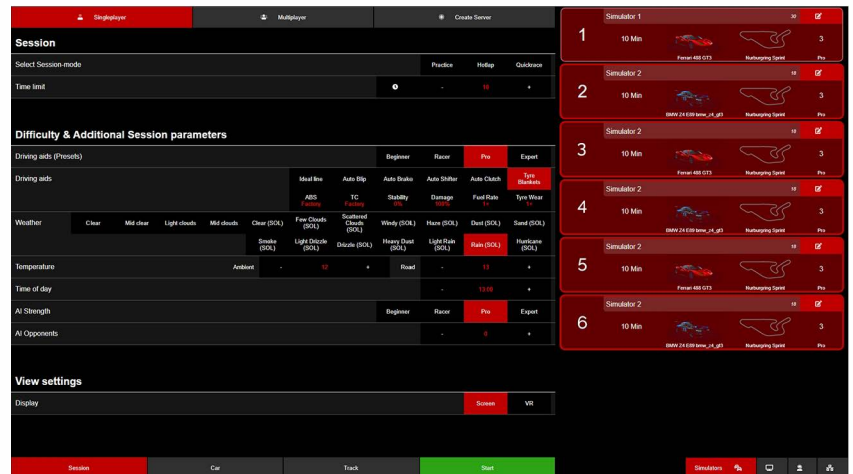
- set time limits, driving aids, weather, ai opponents/ strength etc. with ease
- control simulators individually or bundled
- control sessions (restart, next session etc.)

**Multiplayer:** join multiplayer servers

- set time limits individually or bundled
- control servers remotely

**Create Server:** quickly create a server

- servers are additional to your pre-set servers
- control the most important settings directly



Where to Buy: <https://www.force2motion.de/de/sim-racing-software/>

# SD SOFTWARE

# SD TRACKING

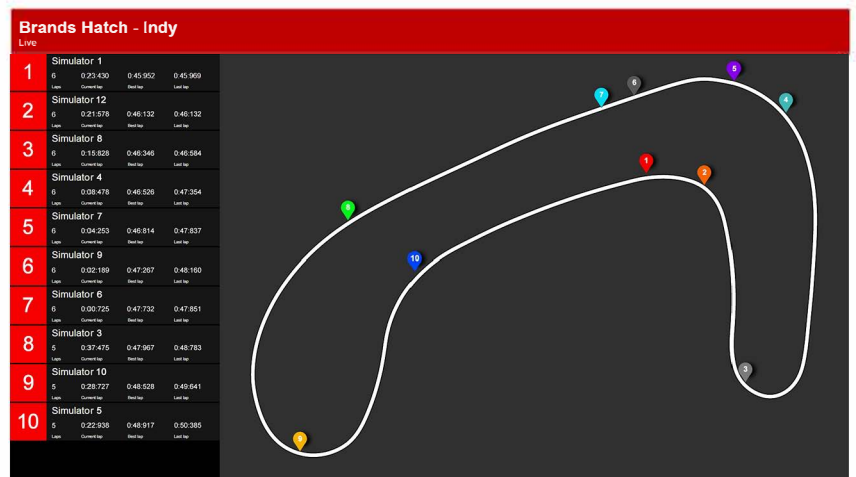
ALWAYS EVERYTHING IN VIEW

## Features

- **livemap**: cars positions on the track in realtime
- **live leaderboard**: all driven laps in a tabular form. incl. sector times in realtime
- leaderboards for car classes and tracks
- leaderboards, livemaps, laptimes and statistics changeable in realtime via SD Command
- easy switching of displayed informations of
- all simulators on all your monitors/ screens
- frequently used cars/ tracks can be saved as favourites
- **time limits**: you can set up various periods of time to be shown as leaderboard. e.g special events or contests
- **various statistics**: show most driven laps or tracks, total kilometers, most active driver etc.

## Online Leaderboards

- all driven laptimes can be transferred to a server
- create online leaderboards with specific car/ track combinations and time limits
- API for accessing laptimes



**Bahrain International Circuit Grand Prix Circuit**

GT3 cars - No limit

Pos.	Driver	Best Lap	Laps	Gap
1	Simulator1	2:02.533	100 Laps	+00.000
2	Simulator12	2:02.540	100 Laps	+00.013
3	Simulator9	2:02.552	100 Laps	+00.019
4	Simulator5	2:02.558	100 Laps	+00.025
5	Simulator3	2:02.574	100 Laps	+00.041
6	Simulator8	2:02.579	100 Laps	+00.046
7	Simulator11	2:02.590	100 Laps	+00.053
8	Simulator7	2:02.598	100 Laps	+00.055
9	Simulator2	2:02.594	100 Laps	+00.061
10	Simulator10	2:02.605	100 Laps	+00.072
11	Simulator4	2:02.642	100 Laps	+00.109
12	Simulator6	2:02.676	100 Laps	+00.143
13				
14				
15				
16				

**SD Command**

Track	Car	Driver	Laps	Current Lap	Best Lap	Last Lap
Brands Hatch	Indy	Simulator 1	6	0:22.430	0:45.952	0:45.969
Brands Hatch	Indy	Simulator 12	6	0:21.576	0:46.132	0:46.132
Brands Hatch	Indy	Simulator 8	6	0:15.826	0:46.345	0:46.554
Brands Hatch	Indy	Simulator 4	6	0:08.478	0:46.526	0:47.354
Brands Hatch	Indy	Simulator 7	6	0:04.253	0:46.814	0:47.837
Brands Hatch	Indy	Simulator 9	6	0:02.189	0:47.257	0:48.190
Brands Hatch	Indy	Simulator 6	6	0:00.725	0:47.732	0:47.851
Brands Hatch	Indy	Simulator 3	5	0:37.476	0:47.967	0:48.783
Brands Hatch	Indy	Simulator 10	5	0:28.727	0:48.528	0:49.541
Brands Hatch	Indy	Simulator 5	5	0:22.938	0:48.917	0:50.385

**Brands Hatch - Indy**

All cars - No limit

Pos.	Driver	Car	Laps	Best Lap	Laps	Gap
1	Simulator 2	Indy	14	0:34.395	100 Laps	+00.000
2	Simulator 8	Indy	3	0:34.892	100 Laps	+00.517
3	Simulator 9	Indy	4	0:44.541	100 Laps	+10.145
4	Simulator 7	Indy	0	0:45.135	100 Laps	+10.741



Where to Buy: <https://www.force2motion.de/de/sim-racing-software/>

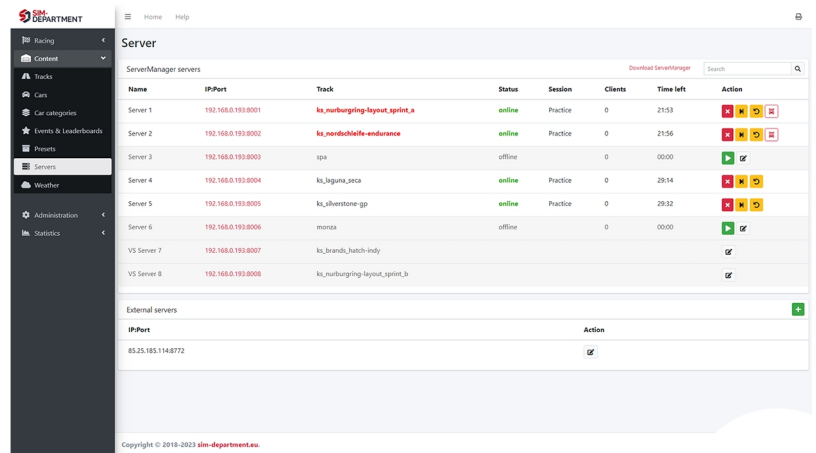
# SD SOFTWARE

# SD ADMIN

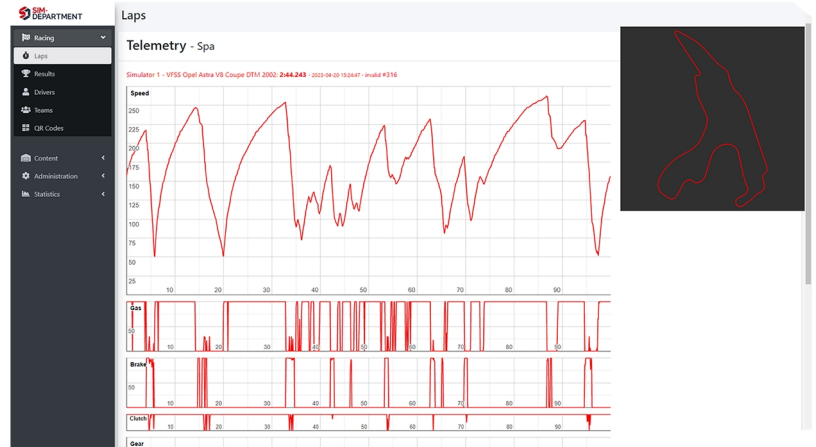
YOU DECIDE WHAT HAPPENS

## Features

- manage and configure your servers
- set up events and leaderboards
- put cars/ tracks in categories, create your own categories
- configure driving aids in presets
- control all aspects of driving on your simulators
- full driver/ team management
- loads of statistics about simulator usage



- all driven laps are stored and printable
- telemetry data for every driven lap



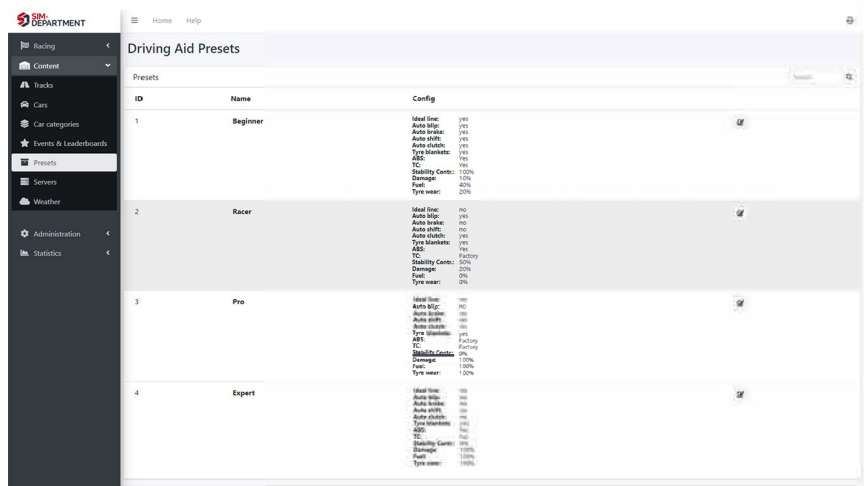
# SD SOFTWARE

# SD ADMIN

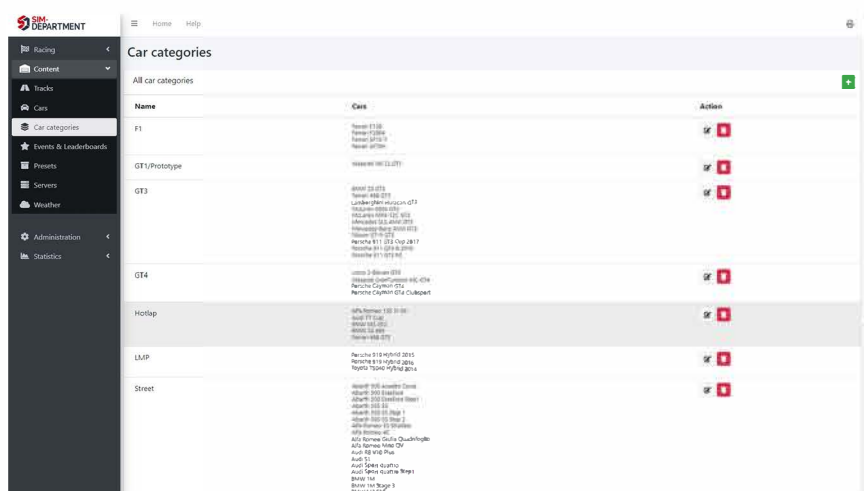
YOU DECIDE WHAT HAPPENS

## Features

- **driving aid presets:** four presets for almost every drivers needs
- very easy to edit



- **car categories:** create categories for cars for easier accessibility in SD Command
- cars can be set in multiple categories



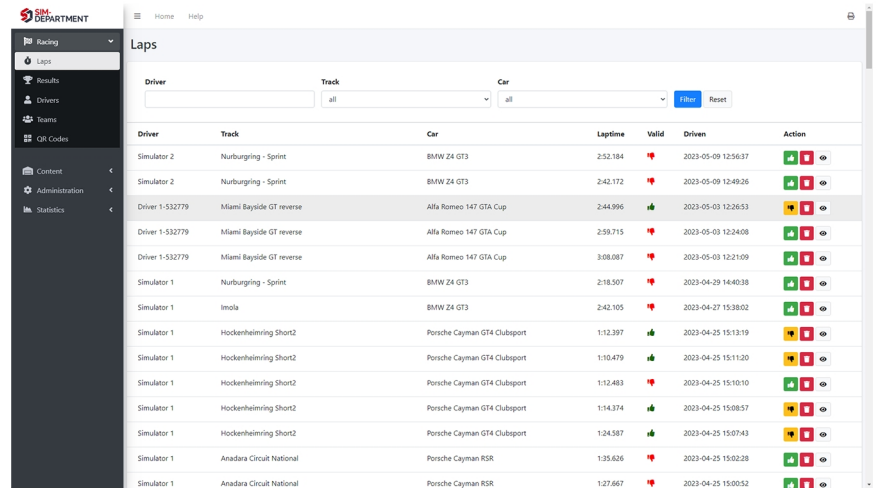


# SD SOFTWARE SD ADMIN

## EVERYTHING UNDER CONTROL

### Features

- **laps:** all driven laps are stored and can be viewed with complete telemetry
- laps are printable

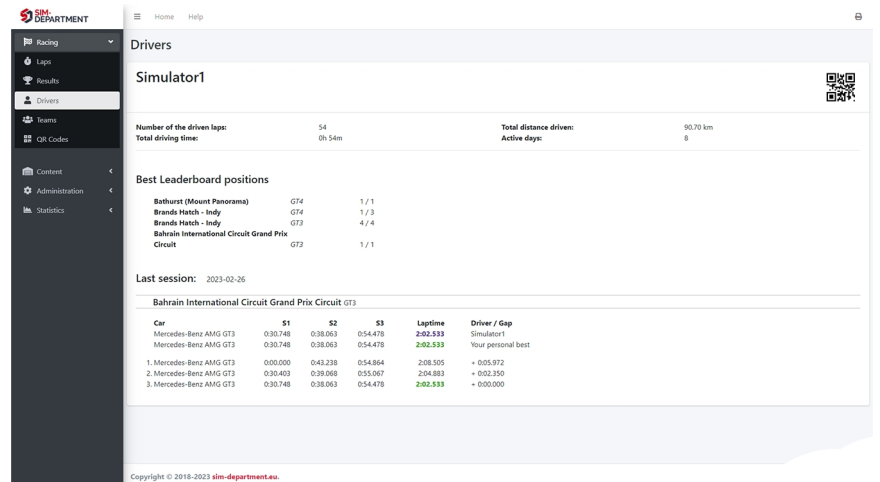


Driver	Track	Car	Laptime	Valid	Driven	Action
Simulator 2	Nurburgring - Sprint	BMW 24 GT3	2:52.184	♥	2023-05-09 12:56:37	📄 🗑️
Simulator 2	Nurburgring - Sprint	BMW 24 GT3	2:42.172	♥	2023-05-09 12:49:26	📄 🗑️
Driver 1-532779	Miami Bayside GT reverse	Alfa Romeo 147 GTA Cup	2:44.996	🟢	2023-05-03 12:26:53	📄 🗑️
Driver 1-532779	Miami Bayside GT reverse	Alfa Romeo 147 GTA Cup	2:59.715	♥	2023-05-03 12:24:08	📄 🗑️
Driver 1-532779	Miami Bayside GT reverse	Alfa Romeo 147 GTA Cup	3:08.087	♥	2023-05-03 12:21:09	📄 🗑️
Simulator 1	Nurburgring - Sprint	BMW 24 GT3	2:18.507	♥	2023-04-29 14:40:38	📄 🗑️
Simulator 1	Imola	BMW 24 GT3	2:42.105	♥	2023-04-27 15:38:02	📄 🗑️
Simulator 1	Hockenheimring Short2	Porsche Cayman GT4 Clubsport	1:12.397	🟢	2023-04-25 15:13:19	📄 🗑️
Simulator 1	Hockenheimring Short2	Porsche Cayman GT4 Clubsport	1:10.479	🟢	2023-04-25 15:11:20	📄 🗑️
Simulator 1	Hockenheimring Short2	Porsche Cayman GT4 Clubsport	1:12.483	♥	2023-04-25 15:10:10	📄 🗑️
Simulator 1	Hockenheimring Short2	Porsche Cayman GT4 Clubsport	1:14.374	🟢	2023-04-25 15:08:57	📄 🗑️
Simulator 1	Hockenheimring Short2	Porsche Cayman GT4 Clubsport	1:24.587	🟢	2023-04-25 15:07:43	📄 🗑️
Simulator 1	Anadara Circuit National	Porsche Cayman RSR	1:35.626	♥	2023-04-25 15:02:28	📄 🗑️
Simulator 1	Anadara Circuit National	Porsche Cayman RSR	1:27.667	♥	2023-04-25 15:00:52	📄 🗑️

- **drivers:** all drivers are stored with statistics
- drivers sheets are printable

- **qr codes:** drivers can register to get a unique qr code
  - qr codes contain booked car, track, simulator und tracktime/ race mode
- register - book - pay - show qr code - race\***

\* additional hardware required.



Best Leaderboard positions			
Bathurst (Mount Panorama)	GT4	1 / 1	
Brands Hatch - Indy	GT4	1 / 3	
Brands Hatch - Indy	GT3	4 / 4	
Bahrain International Circuit Grand Prix Circuit	GT3	1 / 1	

Last session: 2023-02-26						
Bahrain International Circuit Grand Prix Circuit GT3						
Car	S1	S2	S3	Laptime	Driver / Gap	
Mercedes-Benz AMG GT3	0:30.748	0:38.063	0:54.478	2:02.533	Simulator1	
Mercedes-Benz AMG GT3	0:30.748	0:38.063	0:54.478	2:02.533	Your personal best	
1. Mercedes-Benz AMG GT3	0:00.000	0:43.238	0:54.864	2:08.505	+ 0:05.972	
2. Mercedes-Benz AMG GT3	0:30.403	0:39.666	0:55.967	2:04.883	+ 0:02.350	
3. Mercedes-Benz AMG GT3	0:30.748	0:38.063	0:54.478	2:02.533	+ 0:00.000	